

## Portland House, SW15

Approx. gross internal area 503 Sq Ft. / 46.7 Sq M

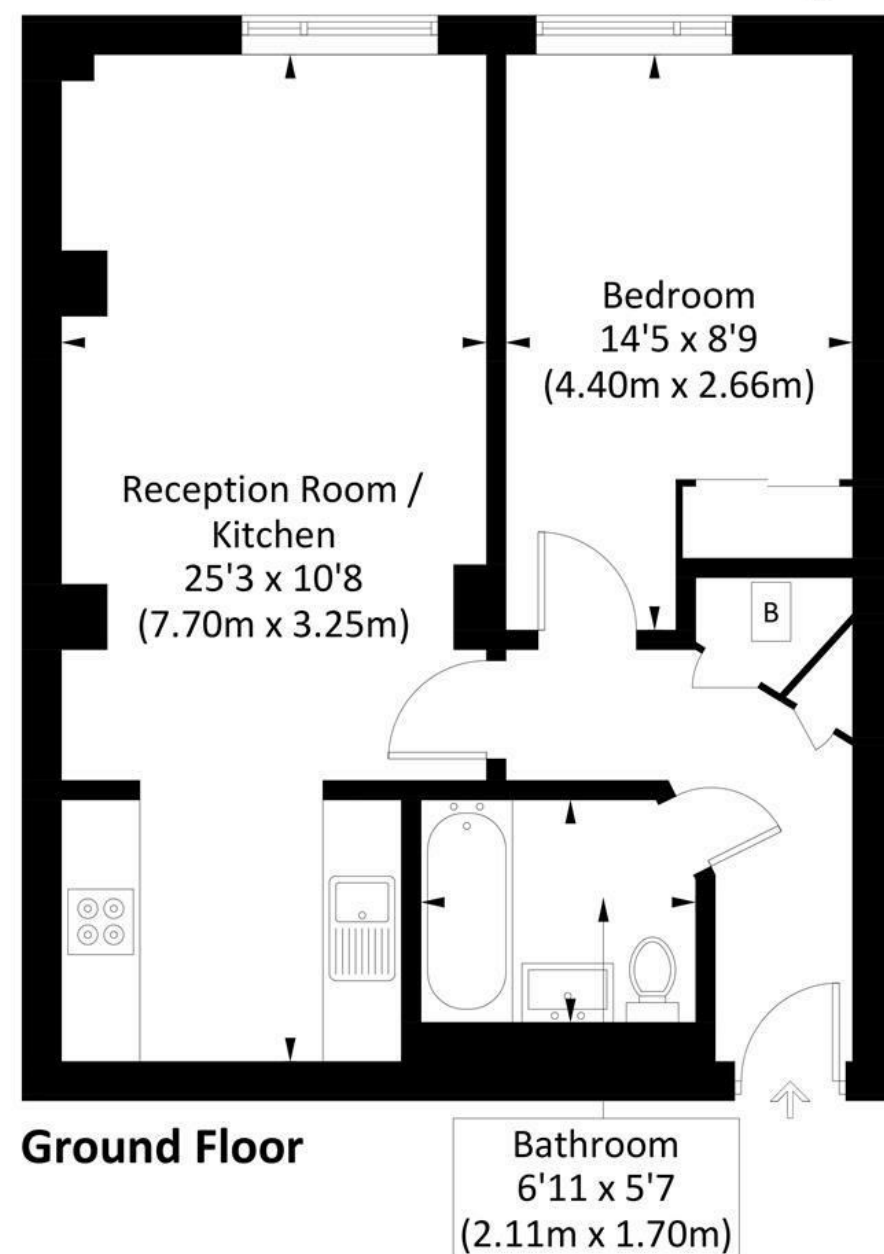


Illustration for identification purposes only, measurements are approximate, not to scale. Fourlabs.co © (ID1276924)

DISCLAIMER•These particulars are intended to give a fair and substantially correct overall description for the guidance of intending purchasers and do not constitute an offer or part of a contract. Prospective purchasers and/or lessees ought to seek their own professional advice.

•All descriptions, dimensions, areas, references to condition and necessary permissions for use and occupation and other details are given in good faith and are believed to be correct, but any intending purchasers should not rely on them as statements or representations of fact, but must satisfy themselves by inspection or otherwise as to the correctness of each of them.  
•All measurements are approximate.



## Portland House, London, SW15

A stunning, fully redecorated and modern one bedroom flat on the ground floor of this highly sought-after private development in central Putney. Offered on an unfurnished basis and benefiting from a concierge service, on-site gym, communal roof garden and wood floors throughout, the accommodation comprises an entrance hallway, bright reception room overlooking one of the the gardens, semi open plan kitchen, a double bedroom with fitted wardrobes, bathroom with shower over the bath and utility cupboard. This stunning flat is ideally located within a short walk of Putney High Street, Putney mainline station and East Putney Underground. Available now.



- GROUND FLOOR FLAT
- SEMI OPEN PLAN KITCHEN
- BATHROOM
- COMMUNAL ROOF GARDEN
- EPC C
- RECEPTION ROOM
- DOUBLE BEDROOM
- ON-SITE GYM & CONCIERGE
- PRIME LOCATION
- COUNCIL TAX BAND E

Per Month  
**£2,000 Per Month**



